

Date: September 12<sup>th</sup>, 2022**Notice for Inviting the Quotation**

**Name of work: Fabrication of ramba swivel plate assembly & spares for Mumbai Monorail.**

Chief Operating Officer, Monorail-PIU, Mumbai Monorail Depot, MMRDA, Next to Anik Bus Depot, Wadala (East), Mumbai-400037 invites sealed quotations from Manufacturers / Distributor/ Dealers/ Fabricator / Other Firms on/before September 19<sup>th</sup>, 2022 for fabrication of ramba swivel plate assembly & spares Mumbai Monorail as per table mentioned below :-

Sr. No.	Item	Description	Qty	UoM	Rate (in Rs.)	GST (if any)	Total Amount (incl. GST)
1	Ramba Swivel Plate (Assembly)	As per drawing	06	Nos.			
2	Ramba Shaft	As per drawing	06	Nos.			
3	Ramba Rocker Bar	As per drawing	20	Nos.			

**Terms and conditions:-**

1. The quotation must be provided on the company's letterhead, duly signed and stamped by the authorized personnel.
2. The quotation must be addressed to Mumbai Metropolitan Region Development Authority.
3. Rate quotes shall be valid for a period of 3 months.
4. Price basis: DDP Monorail Depot, Wadala, Mumbai.
5. Delivery Schedule: Shall be mentioned the in quotation.
6. Warranty Terms: Minimum 01 year against the date of supply of the material.
7. Payment terms: 100% payment within 30 days against delivery and acceptance of material at Mumbai Monorail alongwith Compliance of GSTR 1 and GSTR 3B returns upto the preceding month of the invoice.
8. Liquidated Damages- In case the supply/completion of work is delayed from Seller as per delivery schedule as mentioned in the purchase order due to the reasons solely attributed to the seller/supplier, the supplier shall be liable to pay the liquidated damages i.e. LD @

**Mumbai Metropolitan Region Development Authority**

- 0.5% for every 7 calendar days of delay, subject to maximum up to 05% of total purchase order value. Liquidated Damages shall be deducted from any amount payable to the supplier
9. Shipment documents in Original: Tax Invoices, Delivery Challan / E-way bill, packing list, warranty certificate, Test certificate/Certificate of conformity/ Drawings, etc. as applicable.
  10. The selected bidder must get the technical clearance from RST department of Mumbai Monorail by submitting a sample of each item prior to delivery of complete lot.
  11. The name of work & reference no. shall be written on the sealed envelope.
  12. Vendors shall quote for all the items. Incomplete quotations will be rejected.
  13. Quotation opening date: From September 20<sup>th</sup>, 2022 to September 26<sup>th</sup>, 2022 (Time – 3:00 PM)

  
**Chief Operating Officer** 12.09.2022  
**Mono-PIU, MMRDA**

## RUMBA SWIVEL PLATE ASSEMBLY

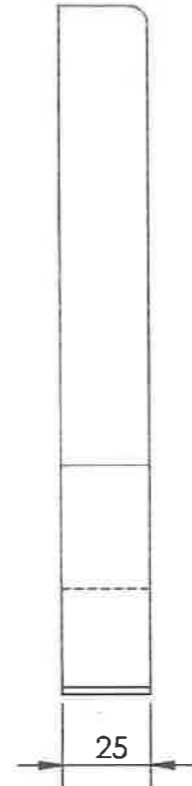
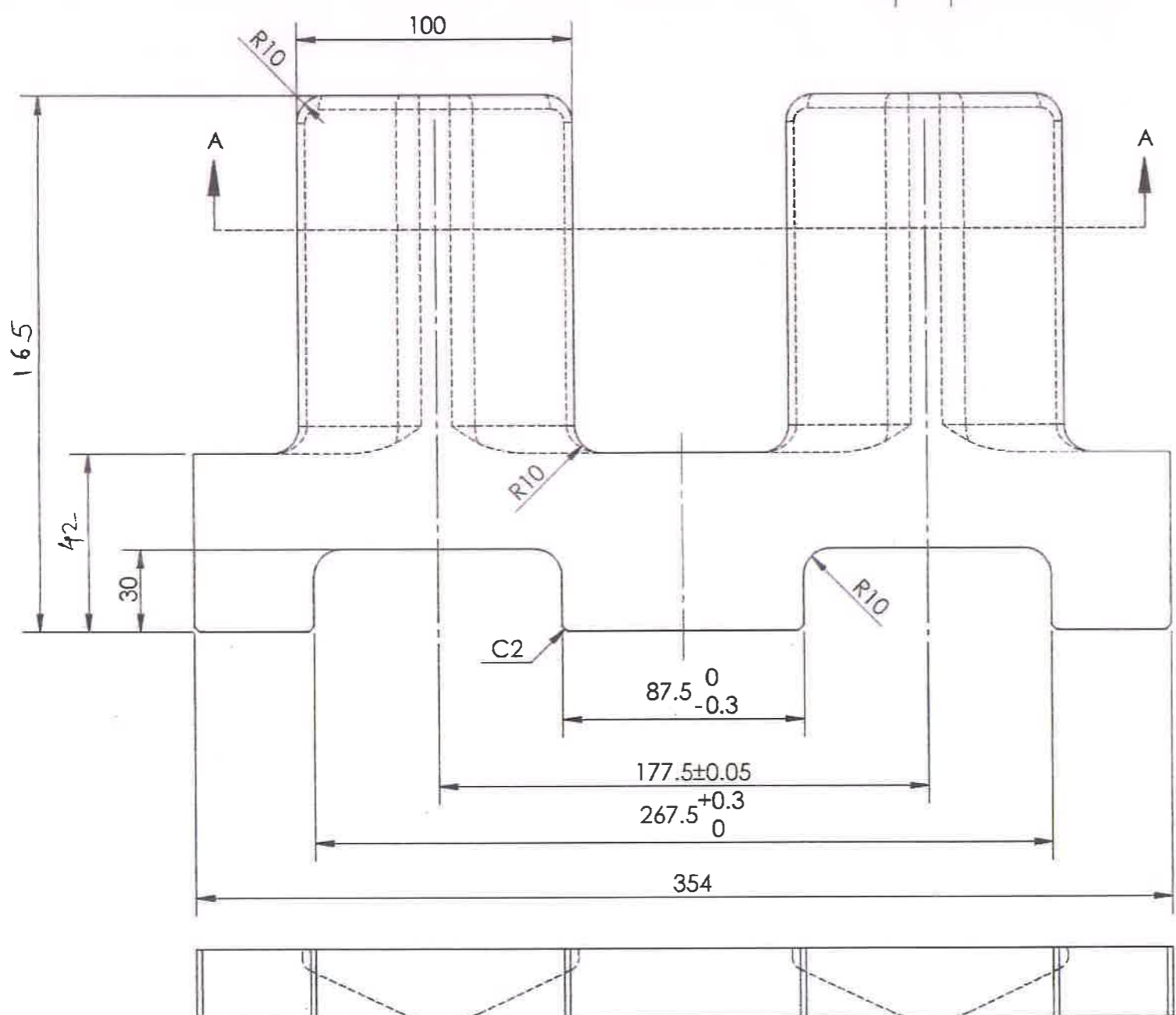
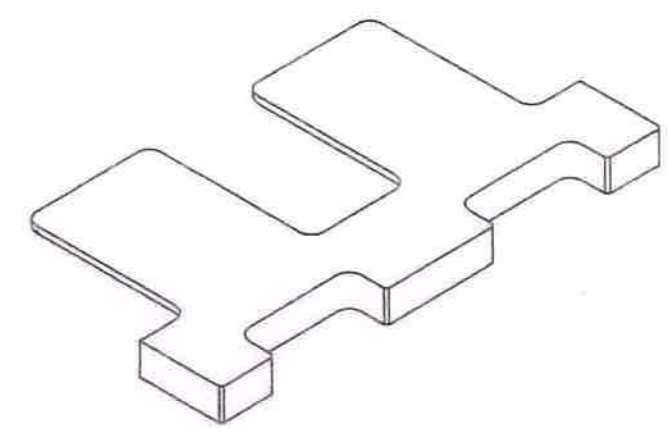
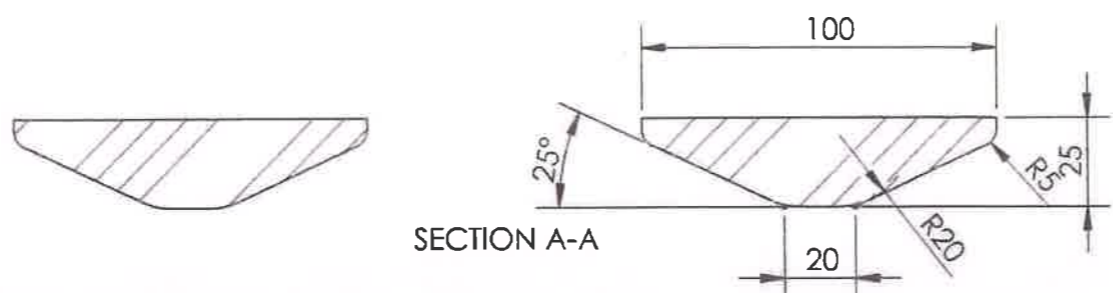


Bill of Material - Rumba Swivel Plate Assembly					
Sr. No.	Item Description	Drawing No.	QTY (in Nos) Per Assembly	Total No. of Required Assembly	Total QTY Required (in Nos)
			A	B	C=A*B
1	Rumba Swivel Plate "B"	MB-TYP01-MIS10-0027	1	4	4
2	Rumba Swivel Plate "A"	MB-TYP01-MIS10-0027	1	2	2
3	Rumba Rocker Plate	MB-TYP01-MIS10-0028	1	6	6
4	Rumbe Hinge B	MB-TYP01-MIS10-0025	1	6	6
5	Rumbe Hinge C	MB-TYP01-MIS10-0026	2	6	12

# RUMBA SWIVEL PLATE "A"

MIS10-0027

0 10 20 30 mm



**Note:**

- 1) All dimensional tolerance for Machined Parts shall be as per design details or +0, -3 mm max.
- 2) All Machined Parts shall be Hot Dipped Galvanized accordance to BS EN 1461:2009
- 3) All Finger Plate materials shall conform to BS EN 10025 S 355 J0 or equivalent
- 4) All Sole Plate materials shall conform to BS EN 10025 S 275 J0 or equivalent
- 5) All Shaft shall be pre cut Hardened Shaft of Hrc 58~63 using high frequency induction quenching with surface hardening of 1~2 mm
- 6) All sharp edges shall be chamfered C0.5 or otherwise stated
- 7) All Bolts shall be treated using Mechanically Glavanized method
- 8) All Bolts engagement thread shall be applied with approved Lock Tight Adhesive

1	S 355 J0	Structural Steel BS EN 10025	355 X 200 X 25	mm
Qty	Mat Code	Material Description	Mat Qty	UOM
Unit mm	Weight	7.01 kg	Drawn	Verified
General Tolerances	ISO 2768-mK	SNA	THG	BI
Sheet	1/1	Scale 1:2	23/02/2015	23/02/2015
			24/02/2015	

<b>MUMBAI PROJECT - SW#21 &amp; SW#22</b>		<b>A3</b>
Drawing Title <b>Finger Joint - Rumba Steel Exit</b>		
Rumba Swivel Plate - Extended 20		
Drawing No	<b>MB-TYP01-MIS10-0027</b>	Rev. <b>A</b>

GOOD FOR CONSTRUCTION

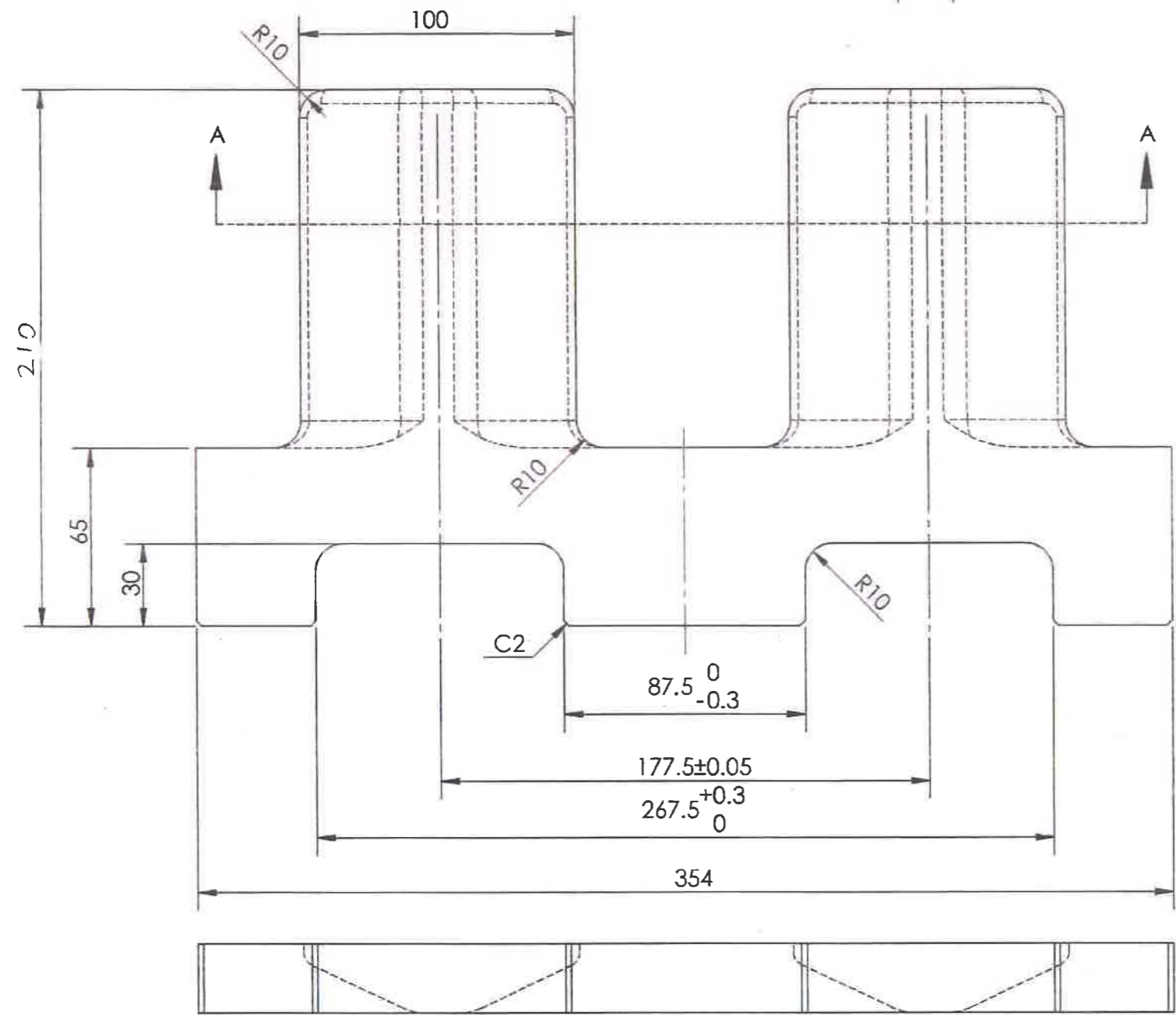
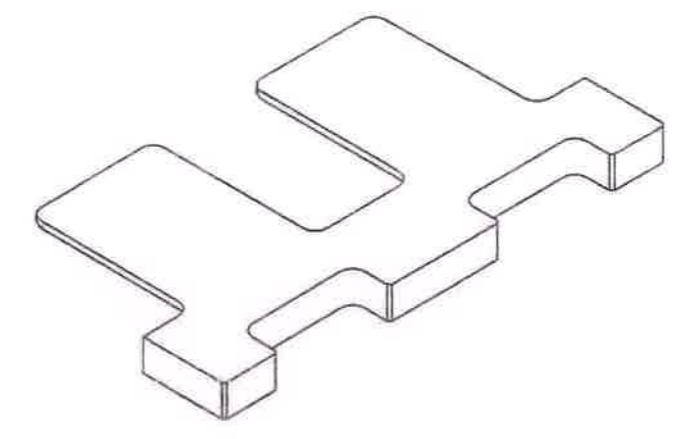
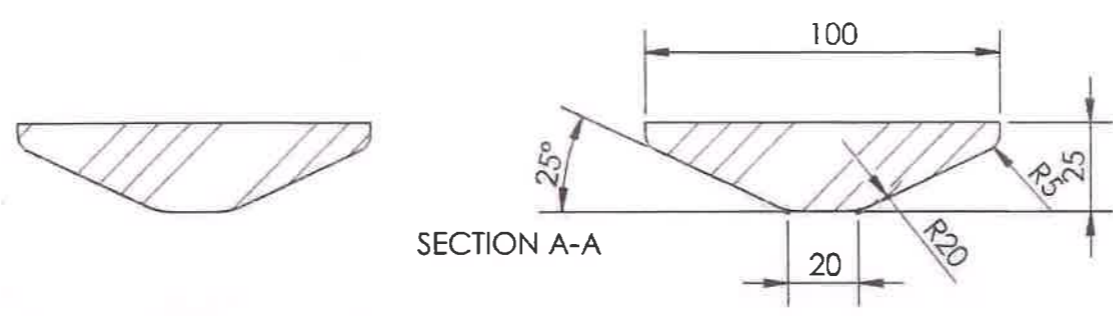


Qty: <input type="text"/>	Qty: <input type="text"/>	Next Assy:	Rev.	Reference	Description	Drawn By	Verified By	Approved By	Date
REVISIONS									

# RUMBA SWIVEL PLATE "B"

MIS10-0027

0 10 20 30 mm



**Note:**

- 1) All dimensional tolerance for Machined Parts shall be as per design details or +0, -3 mm max.
- 2) All Machined Parts shall be Hot Dipped Galvanized accordance to BS EN 1461:2009
- 3) All Finger Plate materials shall conform to BS EN 10025 S 355 J0 or equivalent
- 4) All Sole Plate materials shall conform to BS EN 10025 S 275 J0 or equivalent
- 5) All Shaft shall be pre cut Hardened Shaft of Hrc 58~63 using high frequency induction quenching with surface hardening of 1~2 mm
- 6) All sharp edges shall be chamfered C0.5 or otherwise stated
- 7) All Bolts shall be treated using Mechanically Glvanized method
- 8) All Bolts engagement thread shall be applied with approved Lock Tight Adhesive

1	S 355 J0	Structural Steel BS EN 10025	355 X 200 X 25	mm
Qty	Mat Code	Material Description	Mat Qty	UOM
Unit mm	Weight	7.01 kg	Drawn	Verified
General Tolerances	ISO 2768-mK	SNA	THG	BI
Sheet	1/1	Scale 1:2	23/02/2015	23/02/2015
				24/02/2015

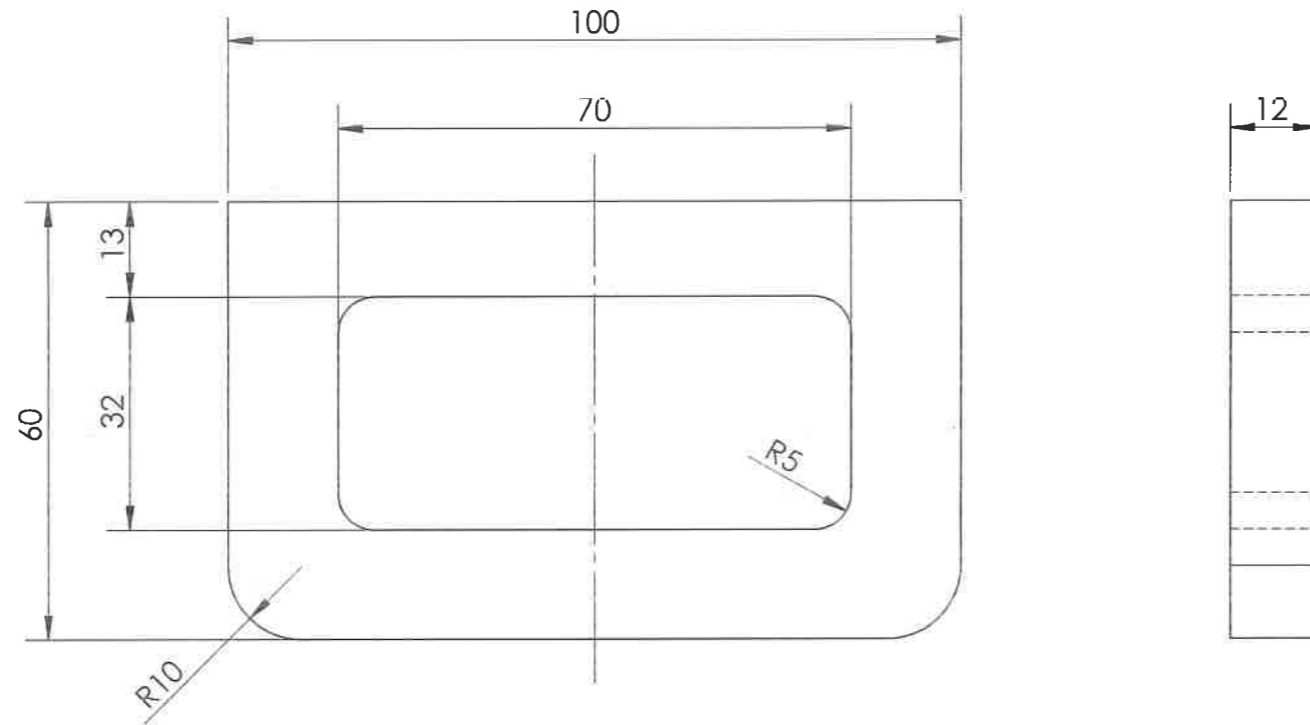
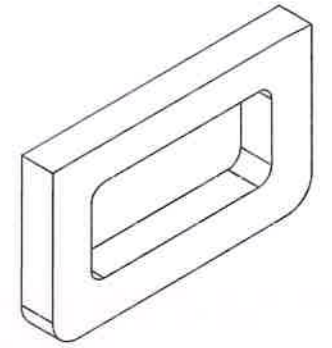
<b>MUMBAI PROJECT - SW#21 &amp; SW#22</b>		<b>A3</b>
Drawing Title <b>Finger Joint - Rumba Steel Exit</b>		
<b>Rumba Swivel Plate - Extended 20</b>		
Drawing No	<b>MB-TYP01-MIS10-0027</b>	Rev. <b>A</b>

GOOD FOR CONSTRUCTION



Qty:	Qty:	Next Assy:	Rev.	Reference	Description	Drawn By	Verified By	Approved By	Date
REVISIONS									





**Note:**

- 1) All dimensional tolerance for Machined Parts shall be as per design details or +0, -3 mm max.
- 2) All Machined Parts shall be Hot Dipped Galvanized accordance to BS EN 1461:2009
- 3) All Finger Plate materials shall conform to BS EN 10025 S 355 J0 or equivalent
- 4) All Sole Plate materials shall conform to BS EN 10025 S 275 J0 or equivalent
- 5) All Shaft shall be pre cut Hardened Shaft of Hrc 58~63 using high frequency induction quenching with surface hardening of 1~2 mm
- 6) All sharp edges shall be chamfered C0.5 or otherwise stated
- 7) All Bolts shall be treated using Mechanically Glavanized method
- 8) All Bolts engagement thread shall be applied with approved Lock Tight Adhesive

1	S 355 J0	Structural Steel BS EN 10025	100 X 60 X 12	mm
Qty	Mat Code	Material Description	Mat Qty	UOM
Unit mm	Weight	0.35 kg	Drawn	Verified
General Tolerances	ISO 2768-mK	SNA	THG	BI
Sheet	1/1	Scale 1:1	23/02/2015	23/02/2015
			24/02/2015	THIRD ANGLE

GOOD FOR CONSTRUCTION

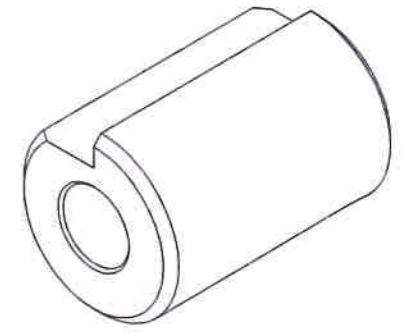
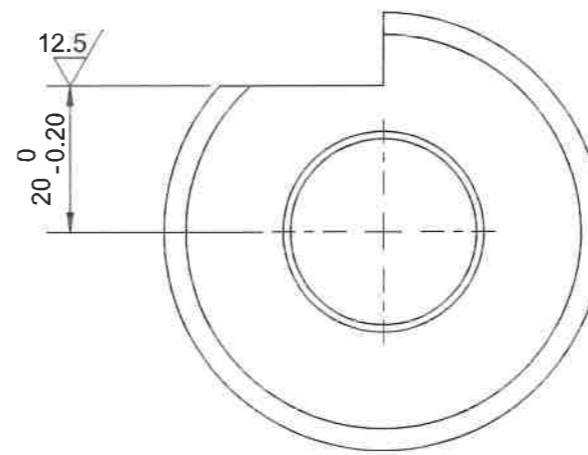
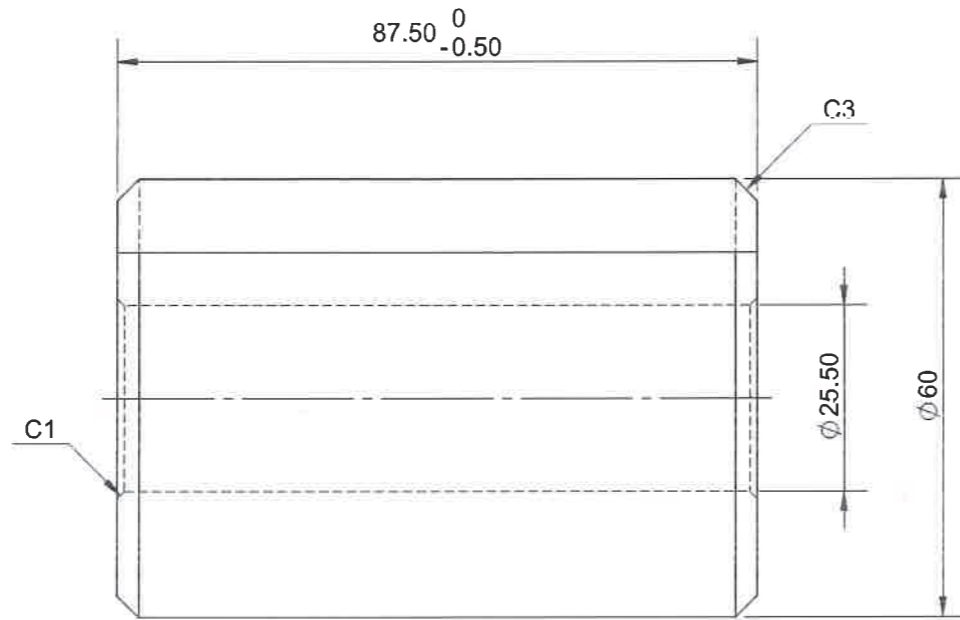


<b>MUMBAI PROJECT - SW#21 &amp; SW#22</b>		<b>A3</b>
Drawing Title <b>Finger Joint - Rumba Steel Exit Rumba Rocker Plate</b>		
Drawing No	<b>MB-TYP01-MIS10-0028</b>	Rev. <b>A</b>

Qty :    Qty :

Next Assy:

Rev.	Reference	Description	Drawn By	Verified By	Approved By	Date
REVISIONS						



**Note:**

- 1) All dimensional tolerance for Machined Parts shall be as per design details or +0, -3 mm max.
- 2) All Machined Parts shall be Hot Dipped Galvanized accordance to BS EN 1461:2009
- 3) All Finger Plate materials shall conform to BS EN 10025 S 355 J0 or equivalent
- 4) All Sole Plate materials shall conform to BS EN 10025 S 275 J0 or equivalent
- 5) All Shaft shall be pre cut Hardened Shaft of Hrc 58~63 using high frequency induction quenching with surface hardening of 1~2 mm
- 6) All sharp edges shall be chamfered C0.5 or otherwise stated
- 7) All Bolts shall be treated using Mechanically Glavanized method
- 8) All Bolts engagement thread shall be applied with approved Lock Tight Adhesive

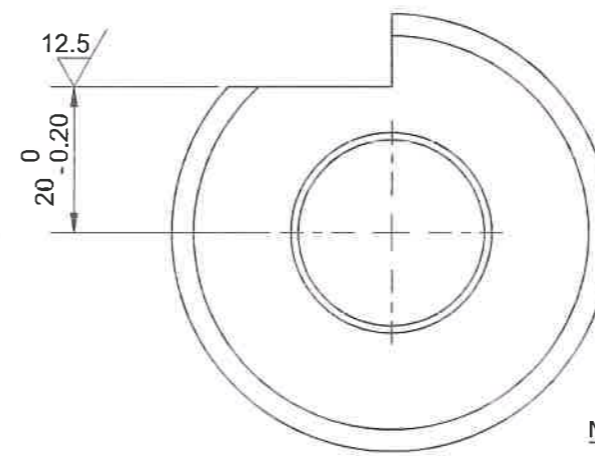
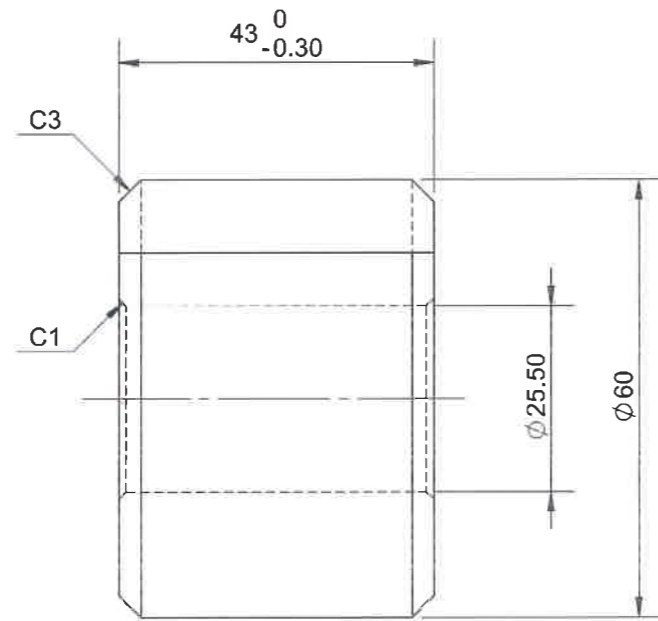
1	S 355 J0	Structural Steel BS EN 10025	Ø 60 X 90	mm
Qty	Mat Code	Material Description	Mat Qty	UOM
Unit mm	Weight	1.46 kg	Drawn	Verified
General Tolerances	ISO 2768-mK	SNA	THG	BI
Sheet	1/1	Scale 1:1	23/02/2015	23/02/2015
			24/02/2015	THIRD ANGLE

GOOD FOR CONSTRUCTION



<b>MUMBAI PROJECT - SW#21 &amp; SW#22</b>		<b>A3</b>
Drawing Title <b>Finger Joint - Rumba Steel Exit</b> <b>Rumba Hinge B</b>		
Drawing No	<b>MB-TYP01-MIS10-0025</b>	Rev. <b>A</b>

Qty :	Qty :	Next Assy :	Rev.	Reference	Description	Drawn By	Verified By	Approved By	IRDA	Date
REVISIONS										



**Note:**

- 1) All dimensional tolerance for Machined Parts shall be as per design details or +0, -3 mm max.
- 2) All Machined Parts shall be Hot Dipped Galvanized accordance to BS EN 1461:2009
- 3) All Finger Plate materials shall conform to BS EN 10025 S 355 J0 or equivalent
- 4) All Sole Plate materials shall conform to BS EN 10025 S 275 J0 or equivalent
- 5) All Shaft shall be pre cut Hardened Shaft of Hrc 58~63 using high frequency induction quenching with surface hardening of 1~2 mm
- 6) All sharp edges shall be chamfered C0.5 or otherwise stated
- 7) All Bolts shall be treated using Mechanically Glavanized method
- 8) All Bolts engagement thread shall be applied with approved Lock Tight Adhesive

1	S 355 J0	Structural Steel BS EN 10025	Ø 60 X 43	mm
Qty	Mat Code	Material Description	Mat Qty	UOM
Unit mm	Weight	0.71 kg	Drawn	Verified
General Tolerances	ISO 2768-mK	SNA	THG	BI
Sheet	1/1	Scale 1:1	23/02/2015	23/02/2015
			24/02/2015	THIRD ANGLE

**MUMBAI PROJECT - SW#21 & SW#22** A3

GOOD FOR CONSTRUCTION



Drawing Title **Finger Joint - Rumba Steel Exit**  
**Rumba Hinge C**

Drawing No **MB-TYP01-MIS10-0026**

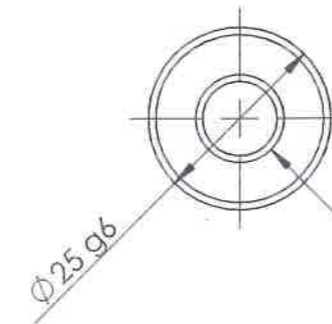
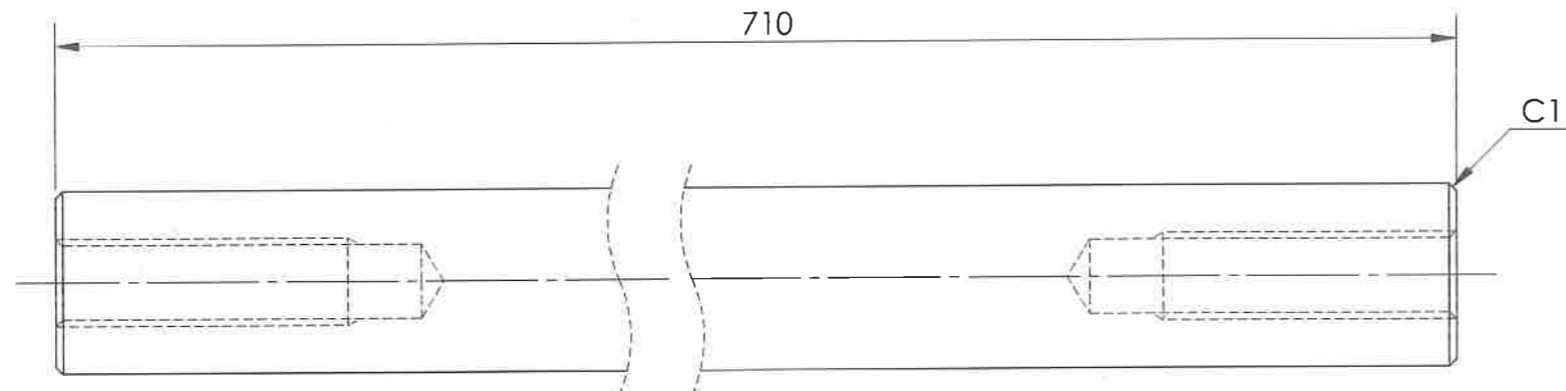
Rev. A

Qty :    Qty :

Next Assy :

Rev.	Reference	Description	Drawn By	Verified By	Approved By	Date
REVISIONS						





$\varnothing$  10.20  $\nabla$  50  
 M12 - 6H  $\nabla$  40  
 $\surd$   $\varnothing$  12.05 X 90°; NEAR SIDE

**Note:**

- 1) All dimensional tolerance for Machined Parts shall be as per design details or +0, -3 mm max.
- 2) All Machined Parts shall be Hot Dipped Galvanized accordance to BS EN 1461:2009
- 3) All Finger Plate materials shall conform to BS EN 10025 S 355 J0 or equivalent
- 4) All Sole Plate materials shall conform to BS EN 10025 S 275 J0 or equivalent
- 5) All Shaft shall be pre cut Hardened Shaft of Hrc 58~63 using high frequency induction quenching with surface hardening of 1~2 mm
- 6) All sharp edges shall be chamfered C0.5 or otherwise stated
- 7) All Bolts shall be treated using Mechanically Glavanized method
- 8) All Bolts engagement thread shall be applied with approved Lock Tight Adhesive

1	S 45 C	Hardened Shaft BS EN 10083-1	$\varnothing$ 25 X 710	mm
Qty	Material Code	Material Description	Material Qty	UOM
Unit mm	Weight	2.65 kg	Drawn	Verified
General Tolerances	ISO 2768-mK	SNA	THG	BI
Sheet	1/1	Scale 1:1	23/02/2015	23/02/2015
			24/02/2015	THIRD ANGLE

GOOD FOR CONSTRUCTION



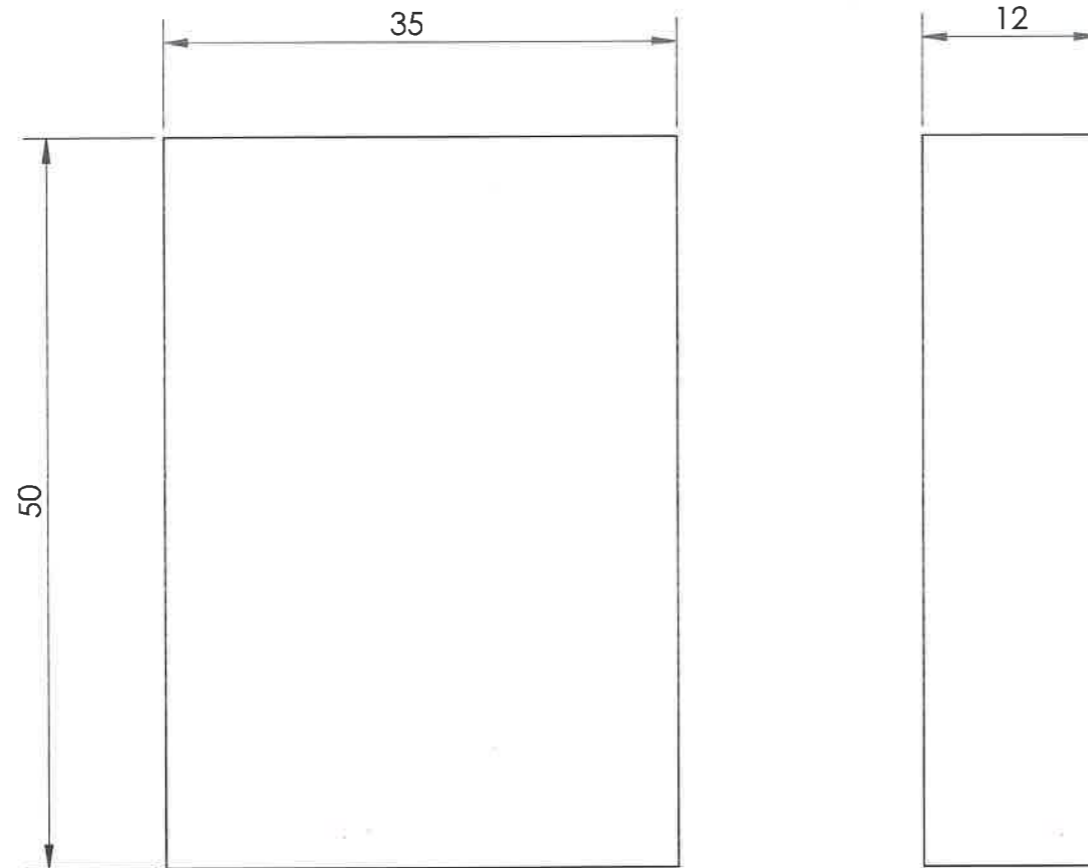
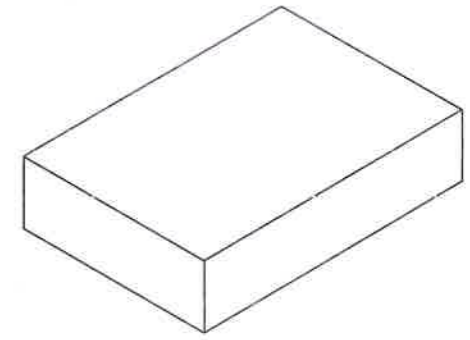
<b>MUMBAI PROJECT - SW#21 &amp; SW#22</b>		<b>A3</b>
Drawing Title <b>Finger Joint - Rumba Steel Exit Rumba Shaft</b>		
Drawing No	<b>MB-TYP01-INT06-0034</b>	Rev. <b>A</b>

Qty :	Qty :	Next Assy :	Rev.	Reference	Description	Drawn By	Verified By	Approved By	Date
REVISIONS									



INT06-0027

0 10 20 30 mm



**Note:**

- 1) All dimensional tolerance for Machined Parts shall be as per design details or +0, -3 mm max.
- 2) All Machined Parts shall be Hot Dipped Galvanized accordance to BS EN 1461:2009
- 3) All Finger Plate materials shall conform to BS EN 10025 S 355 J0 or equivalent
- 4) All Sole Plate materials shall conform to BS EN 10025 S 275 J0 or equivalent
- 5) All Shaft shall be pre cut Hardened Shaft of HrC 58~63 using high frequency induction quenching with surface hardening of 1~2 mm
- 6) All sharp edges shall be chamfered C0.5 or otherwise stated
- 7) All Bolts shall be treated using Mechanically Glvanized method
- 8) All Bolts engagement thread shall be applied with approved Lock Tight Adhesive

1	S 355 J0	Structural Steel BS EN 10025	50 X 35 X 12	mm
Qty	Mat Code	Material Description	Mat Qty	UOM
Unit	mm	Weight 0.16 kg	Drawn	Verified
General Tolerances	ISO 2768-mK	SNA	THG	BI
Sheet	1/1	Scale 2:1	23/02/2015	23/02/2015
			24/02/2015	THIRD ANGLE

GOOD FOR CONSTRUCTION



**Scomi**  
SCOMI RAIL BERHAD

<b>MUMBAI PROJECT - SW#21 &amp; SW#22</b>		<b>A3</b>
Drawing Title <b>Finger Joint - Rumba Steel Exit Rumba Rocker Bar</b>		
Drawing No	<b>MB-TYP01-INT06-0027</b>	Rev. <b>A</b>

Qty :    Qty :

Next Assy :

Rev.    Reference    Description

REVISIONS

Drawn By    Verified By    Approved By    Date

8

7

6

5

4

3

2

1